

Participants

Reminders –

- ❑ **Health Forms A/B** – please bring completed forms at check-in or turn into the scout office by Thursday. ALL PARTICIPANTS NEED THEM
- ❑ **Youth Protection Training** – adults please make sure YPT is current within one year per Midnight Sun Council guidelines (ADULT LEADERS + VOLUNTEERS)
- ❑ **Campers** – food is only provided Saturday at lunch. Bring a potluck dish on Saturday night!
- ❑ **Parking** – please park at the bottom parking lot if attending the day event. Plan to get to Lost Lake early before flags. It is about a 10-minute walk from the parking lot to Honor Lodge. Families with tag-a-longs may consider bringing a wagon. Overflow parking by the Waterfront.
- ❑ All Afternoon Activities will be held at the Honor Lodge after Polar Bear Plunge.
- ❑ **Polar Bear Plunge** - 2pm at the Waterfront! Earn your plunge patch! Bring extra clothing and a towel.
- ❑ **Afternoon Activities (Honor Lodge):**
 - **Golden Skillet Theme** – Dessert!
 - Submit your dish to the Honor Lodge by 5pm Saturday
 - Sign up at check-in
 - **Handicraft project – Neckerchief slides**
 - Limited spaces – please sign up at check-in
 - Supplies for tag-a-longs available
- ❑ **Campfire Program / Retire Flags:**
 - All packs should represent a skit/song.



We are expecting cool, rainy weather. Be prepared with warm gear for you and your kids. We will have warm food and drinks available. There's plenty of fall fun to be had by all. See you this weekend!

Phil Burkett

Jodi Tansky



Activity Schedule

Friday, September 16th 5pm – Arrival + Check In

5pm-10pm – Camp Setup, Meals as Packs/Families

Saturday, September 17th

8:00am – Check In at Honor Lodge for Day event arrivals

8:30am – Flags at Honor Lodge

9:00-10:00am – Station 1

10:15am – 11:15am – Station 2

11:30am-12:30pm – Station 3

12:30pm -1:30pm– Lunch at Honor

2:00pm – Afternoon Activities Begin

- Polar Plunge at Waterfront
- Handicraft Project
- Rock Climbing Wall

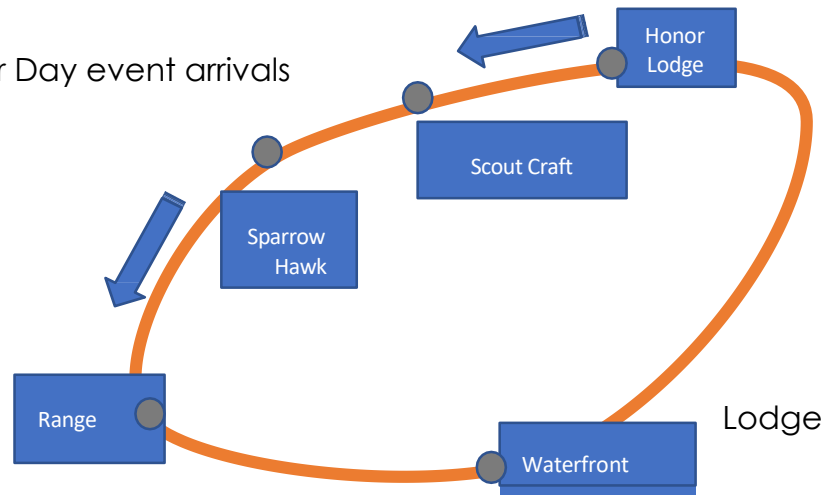
3:30pm – Pack/Family Time

- Golden Skillet preparation? Skit practice?

5:00pm – Golden Skillet submissions to Honor Lodge for Competition

5:30pm – 6:30pm Potluck/Golden Skillet

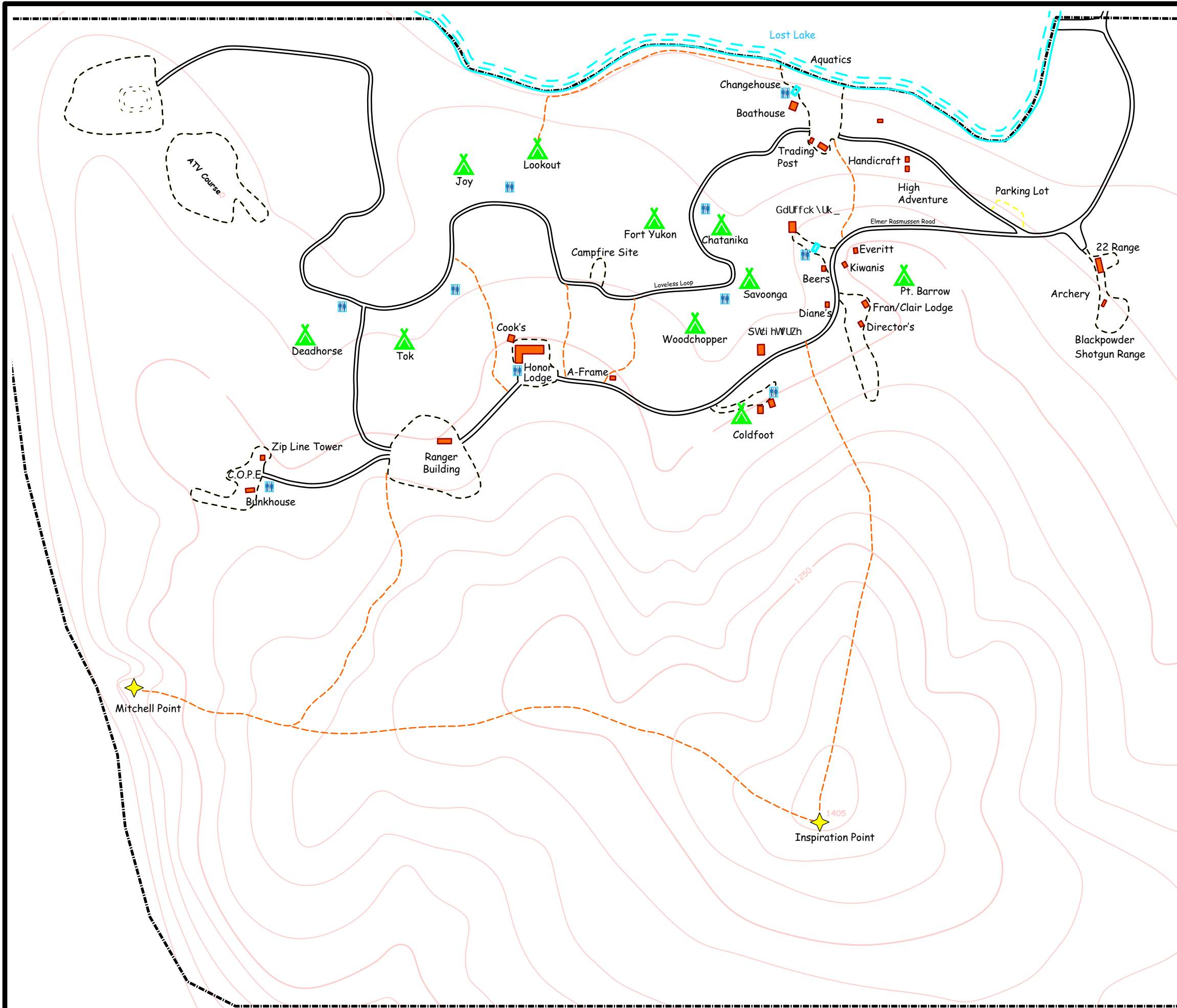
TBA Campfire Program at Fire bowl



Polar Plunge

- There will be a polar plunge opportunity on Saturday at 2:00 p.m., weather depending (we want to be safe!)
- This is entirely optional for those who wish to participate.
- There will be a warming fire at the waterfront.
- Participants should plan to have warm clothes to put on as soon as they exit the water.

Midnight Sun Council Lost Lake Scout Camp



Legend:

- Campsites
- Buildings/Cabins
- Property Line
- Restrooms, Changerooms and/or Showers
- Open/Cleared Areas
- Roads
- Trails
- Topographic Contour lines, Elevations in feet (50 foot contour interval interpreted from USGS Big Delta (B-6) Quadrangle, 1987)

Approximate Scale (feet):

